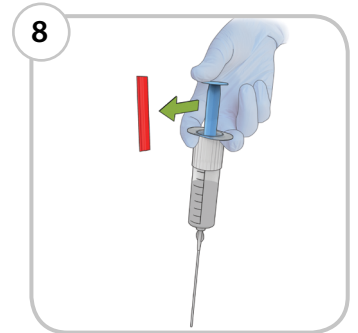
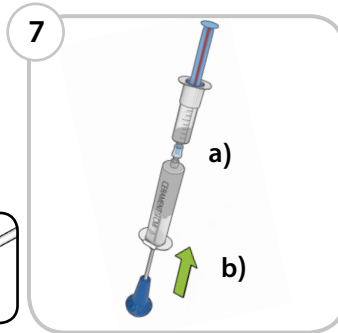
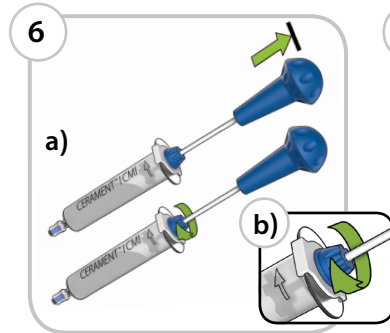
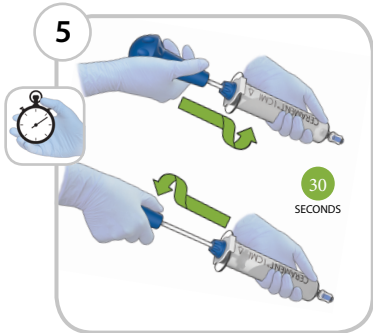
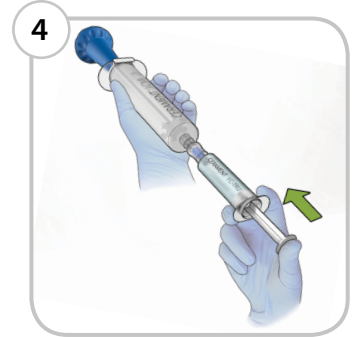
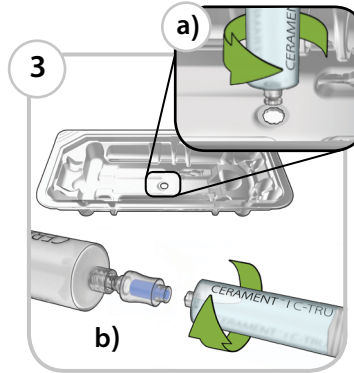
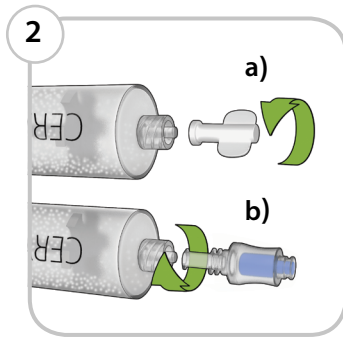


# CERAMENT™ | BONE VOID FILLER

## Preparation of paste

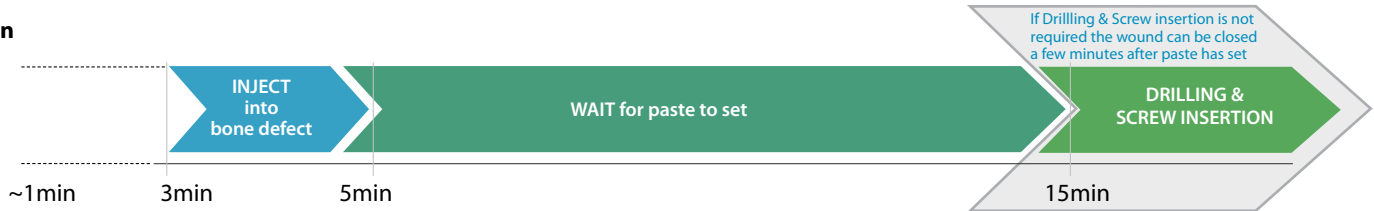


**Filling of the bone defect (void/gap) - 3 different options**

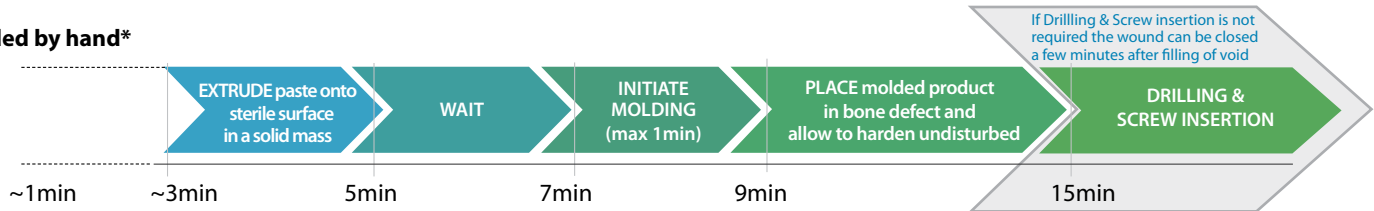


*All timelines are calculated from the Start of Mixing and vary slightly depending on product use*

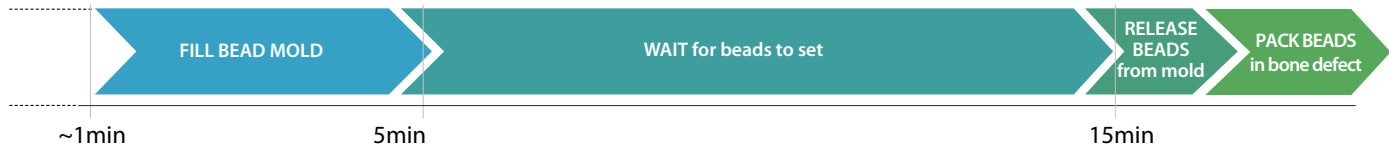
**Injection**



**or Molded by hand\***



**or Molded with use of Bead Mold Trays\*\***



\* NOTE: Do not manipulate or touch extruded paste unnecessarily before initiation of molding.

\*\* Bead Mold not included in pack.